

# **Parking Analysis via Image Processing**

Presented by  
Wi-Fight It



**Required Resources,  
Development Environment,  
and Project Demonstration**



## Required Resources

---

- ◆ Hardware
  - ◆ Single Board Computer
  - ◆ Camera
- ◆ Software
  - ◆ OpenCV
  - ◆ React



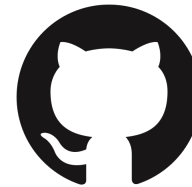
## **Development Environment**

---

◆ Visual Studio Code



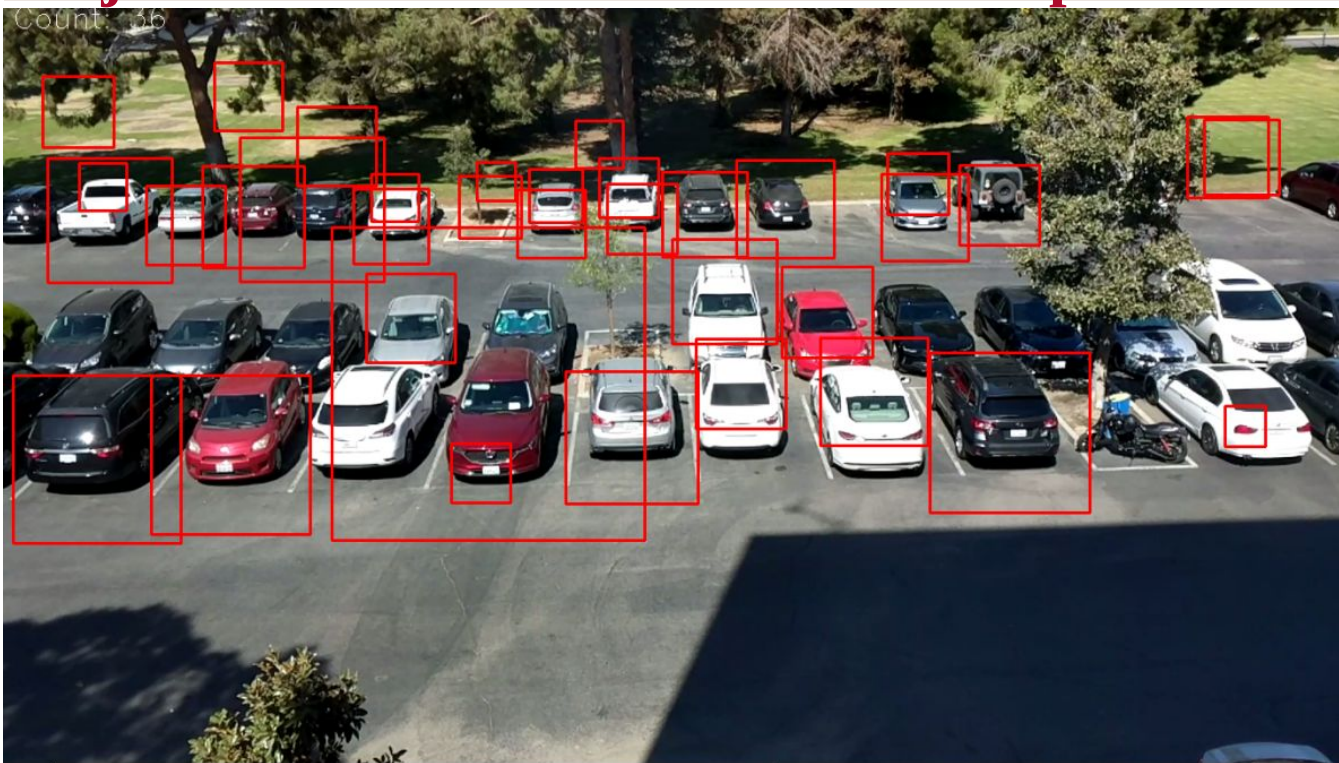
◆ Github







# Project Demo: A Small Proof of Concept





## **Phase Breakdown**

## **Timeline**

- |                                 |              |
|---------------------------------|--------------|
| I. Proof of Concept             | (Sept.-Oct.) |
| II. Program Implementation      | (Nov.-Dec.)  |
| III. Online Interface for Users | (Jan.-Feb.)  |
| IV. Predictive Models           | (Mar.-May)   |



**Thanks for listening!**

Wi-Fight It