



## What is Gistory:

Gistory aims to make history more accessible and engaging for everyone. Whether you are a history enthusiast, student, or educator, Gistory provides a platform to discover, learn, and share historical information.

## Why Use Gistory:

It is ideal for documenting historical or personal events by providing tools such as the ArcGIS API map, visual timelines, and different forms of media to convey relevance and interconnectedness of global occurrences.

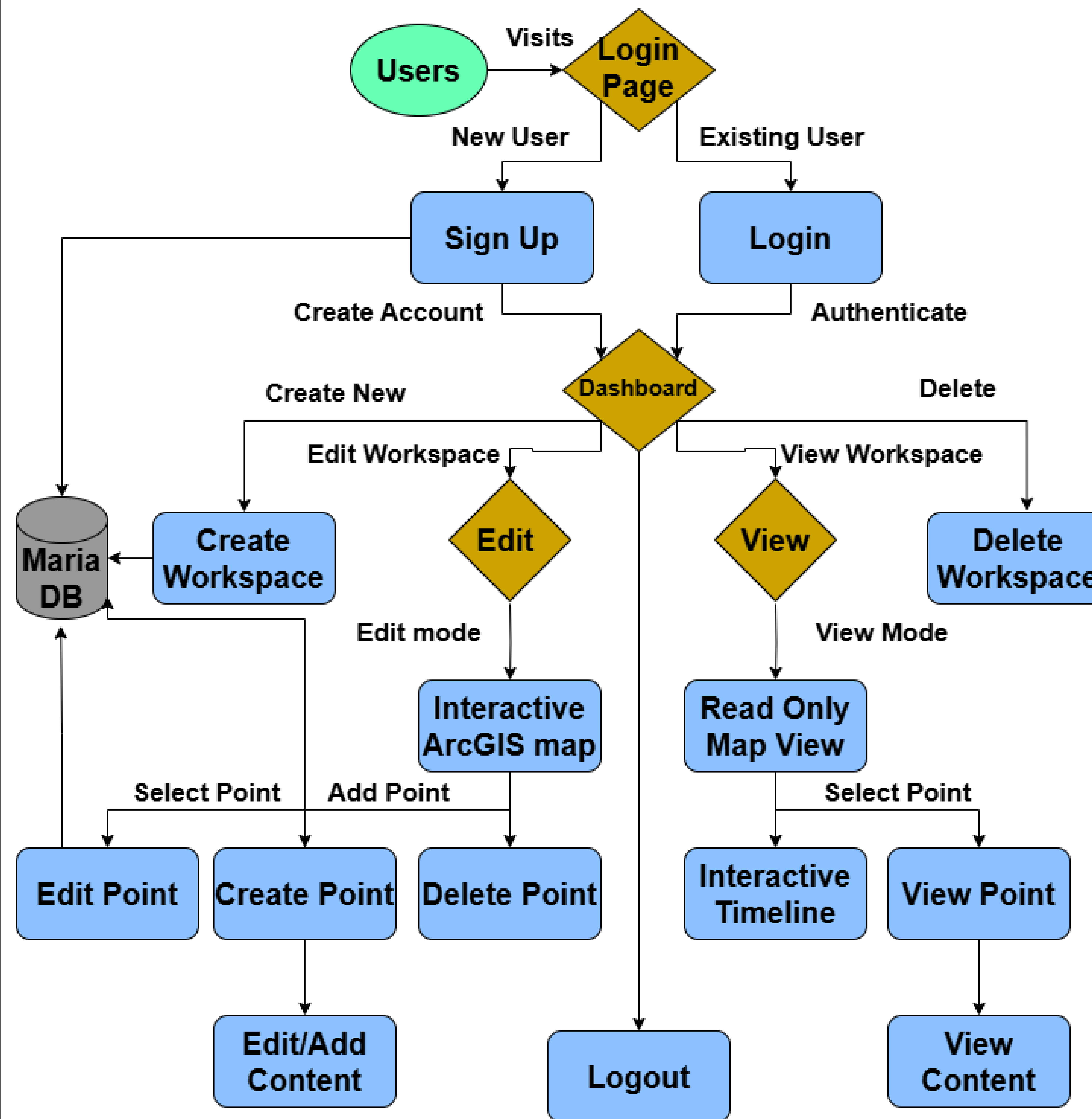
Traditional PowerPoint presentations can be too static and limited in portraying the bigger picture. Our solution is an interactive chronological atlas that adds layers beyond a static presentation. This encourages creative exploration by allowing users to visualize connections between events on a map.

## How To Access:

Gistory is hosted on CSUB's Artemis server.

<https://artemis.cs.csub.edu/~gistory/login>

## Structure:



## Technology:

- Google Gemini
- PHP
- MariaDB
- ArcGIS
- HTML5
- JavaScript
- CSS3

## Key Features:

Our interactive mapping platform brings geographical data to life by allowing users to add multimedia-rich markers across locations. With custom timeline features, AI chatbot assistance, and an intuitive search bar, you can create chronological narratives and easily navigate content. The full-screen viewing option ensures an immersive experience as you explore location details and associated media.

## Edit and View Mode:

